



SPEC SHEET

Screw-in Filter Tubes

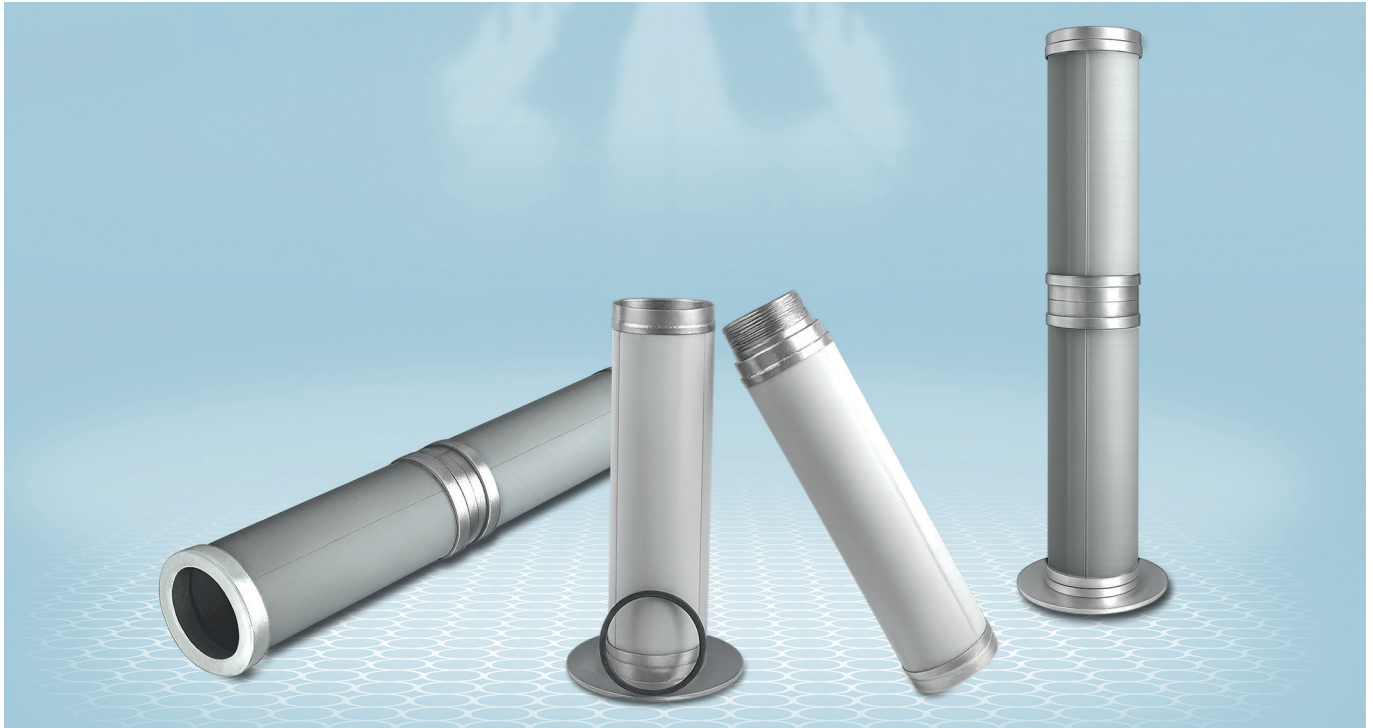
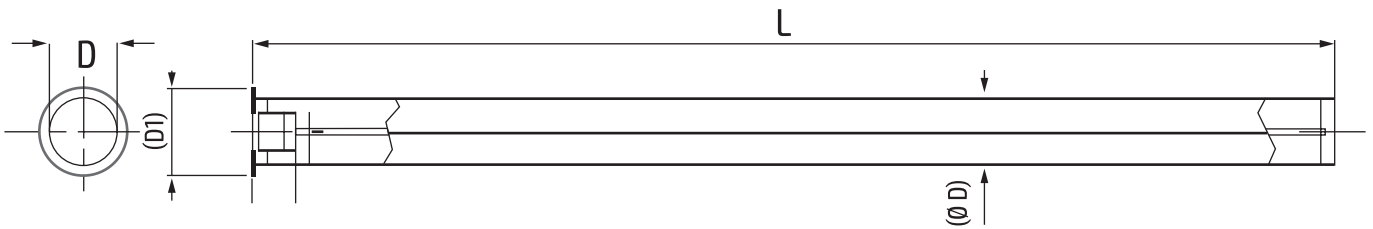


Table of standard Filter-Tubes SMF®-10 and SMF®-20



Diameter (D)	mm	55	77	97	116	116	155	155	155	155 coupled	194
Length* (L) up to	mm	1,000	1,500	1,500	1,500	2,500	2,500	3,000	5,000	5,000	3,000
Diameter flange (D1)	mm	75	100	125	155	155	200	200	200	200	250
Material thickness flange	mm	3	3	4	4	4	5	5	5	5	6
Filtration surface	m ²	0.17	0.36	0.45	0.55	0.55	1.21	1.46	2.42	2.42	1.83
Weight	kg	0.29	0.60	0.75	3	3	8	9.6	16	17	12
HJS-Article No. SMF®-10		93 80 5510	93 80 7715	93 80 9715	93 80 1115	93 80 1117	93 80 1400	93 80 1401	93 80 1402	93 80 1403	93 80 1930
HJS-Article No. SMF®-20		93 80 5511	93 80 7716	93 80 9716	93 80 1116	93 80 1118	93 80 2400	93 80 0005	93 80 0006	93 80 0007	93 80 1931

* For longer Filter-Tubes, elements can be coupled

Contact person:

Hubertus Borgmeier

hubertus.borgmeier@hjs.com

+49 2373 987-282

HJS Emission Technology GmbH & Co. KG

Dieselweg 12
58706 Menden/Germany

Phone +49 2373 987-0
Fax +49 2373 987-199

E-Mail hjs@hjs.com
Internet www.hjs.com





Screw-in Filter Tubes

Parameter	Unit	Values SMF-10	Values SMF-20	Values SMF-30
Weight	g/m ²	1,650	1,725	1,825
Thickness	mm	0.38	0.41	0.44
Porosity	%	45	48	51
Air permeability @ ¹ 200 Pa	l/dm ² min	20	82	137
Max. Pore size ²	µm	16	38	50
Mean Flow Pore Size ²	µm	13	27	33
Min. Pore size ²	µm	12	22	26
Conductivity @ 20 °C	S/m	0.5 x 10 ⁶	0.5 x 10 ⁶	0.5 x 10 ⁶
Tensile strength (R _{p0.2})	MPa (x/y)	25 / 36	15 / 35	14 / 33
Efficiency Ulmer Weiß XMF	%	99.999	99.998	99.994
Δp @ 3.3 cm/s, clean ³	Pa	236	64	40
Δp @ 3.3 cm/s, after 30 cycles ³	%	+25	+40	+45
Efficiency ISO ePM1 fresh anal, F9 ⁴	80 % - 95 %	85 % @ 4.0 cm/s		

¹ISO 4022 · ²ASTM D6767 (Capillary Flow Test w. IPA) · ³VDI 3926 Dust Ulmer Weiß XMF (x_{50,3}=3.3 µm) · ⁴ISO 16890 (sheet test up to Δp 450 Pa), conditioning in 2/20 cycles acc. VD 3926

Put your trust in **HJS** and benefit from our extensive experience

- > Products for liquid and hot gas filtration
- > Certified reduction of emissions
- > Products for OEM and retrofit
- > Protection of human health and the environment

